

#4

POST-CRASH CARE & RESPONSE

The topic will discuss the role of post-crash care & response to road safety and how it can save lives, when all measures failed at preventing a crash. And also including the other services outside medical care that are needed to help the victim be reintegrated in society.



ROAD SAFETY MANAGEMENT: PREPARING YOUR LGU

DR. MELISSA SENA

Prior to Dr. Sena's current engagement, she also worked as a health emergency management staff in the unit of the DOH that manages health emergencies and disasters of national and international scope.

She was a Bloomberg Initiative for Global Road Safety Legal Development Fellow from 2017-2020.

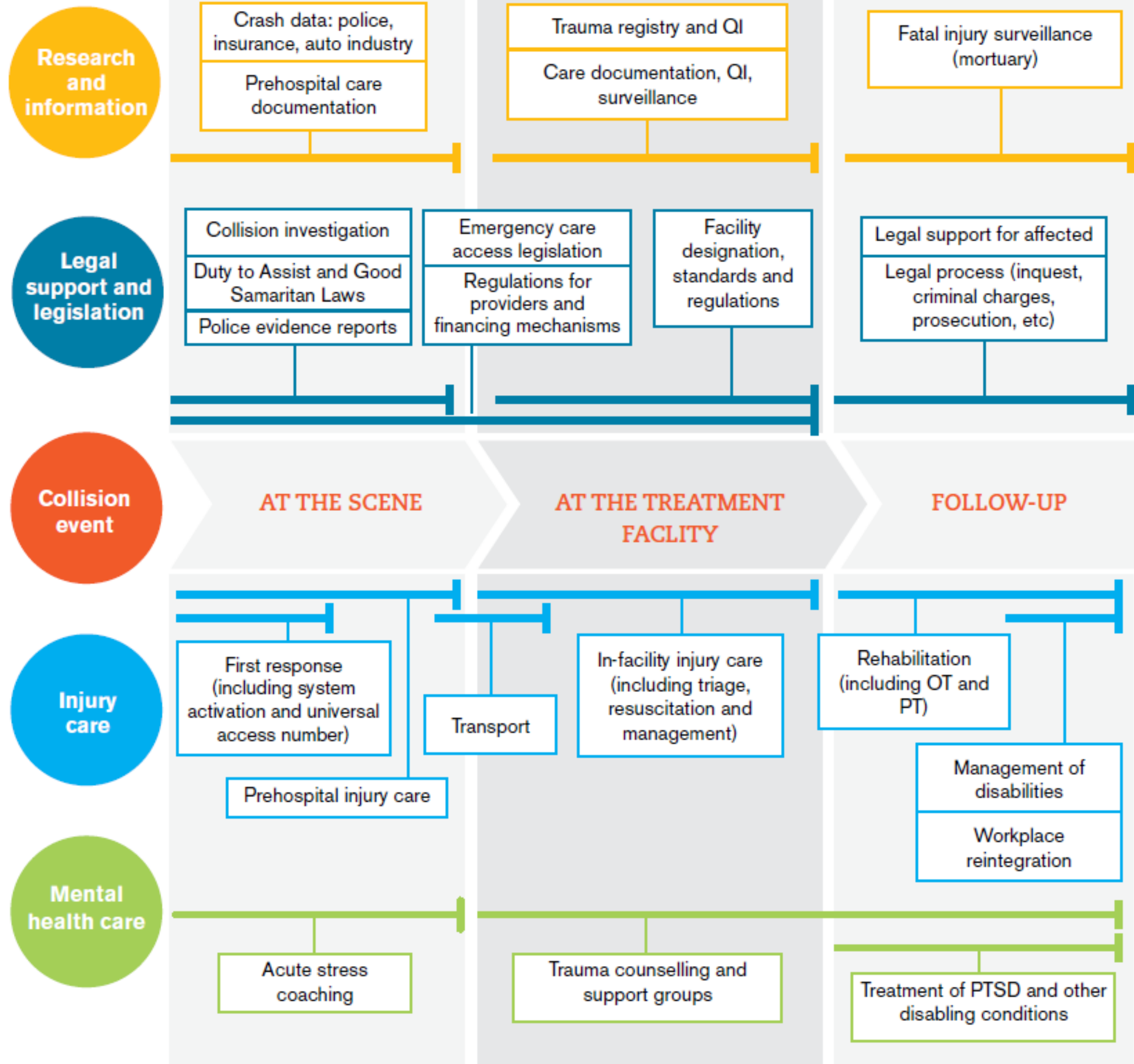


MEDICAL OFFICER IV

Health Facilities Development Bureau
Department of Health (DOH)



Key Components of the Post-Crash Response



Source: Post-crash response: Supporting those affected by road traffic crashes. Geneva, World Health Organization, 2016

QI = Quality Improvement; PT = Physiotherapy; OT = Occupational Therapy

BURDEN ON INJURIES

- Between 20 and 50 million people are left injured or disabled;
- Overall economic costs range from 2-5 % of GDP in many countries.

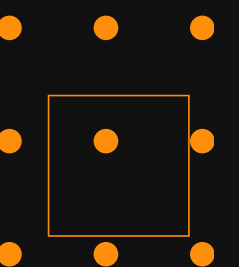


ROAD CRASH

- If a member of a family is involved in a road crash, what kind of changes are likely to occur in that particular family?
- If the head of household or breadwinner is killed or severely injured, the impact to that household can be devastating.



Scarce plausible surveys to show effects of road crashes on households.



ROAD CRASH & POVERTY

INCOME GAPS BETWEEN ROAD CRASH VICTIMS & NON-VICTIMS:

- It is very hard for victims of road-crashes to get well-paying jobs.
- Average income of the disabled US\$820 (victim in his 50s) vs US\$4,090 (non-victim)



- Economic losses tend to have a lasting impact for survivors of road crashes.

EMERGENCY CARE SYSTEM

- Nearly half of deaths and over a third of disability in low and middle income countries could be addressed by the implementation of effective emergency care.
- The World Health Assembly has called on Member States to prioritise the establishment of integrated emergency and trauma care systems.



EMERGENCY

- Any situation that requires immediate action (WHO).
- A condition or state of a patient wherein based on the objective findings of a prudent medical officer on duty for the day where he/she is in immediate danger and a delay in initial support and treatment may cause loss of life or cause permanent disability to the patient (RA 8344).



EMERGENCY CARE SYSTEM

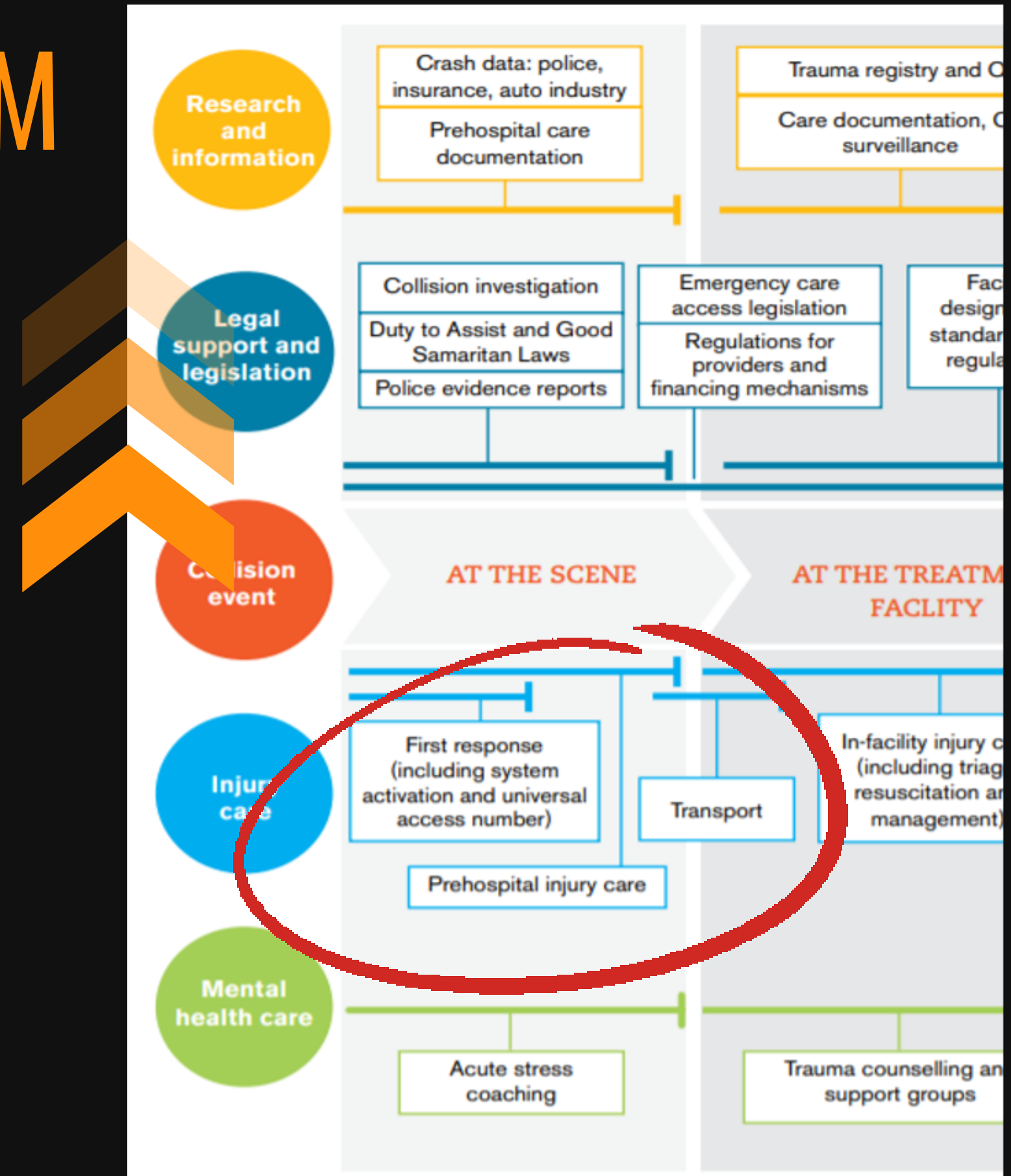
- At the core of the post-crash response
- Serves as the first point of contact for many around the world

1. Bystander response

- Recognize injury
- Call for help
- First aid

2. Dispatch

3. Provider response

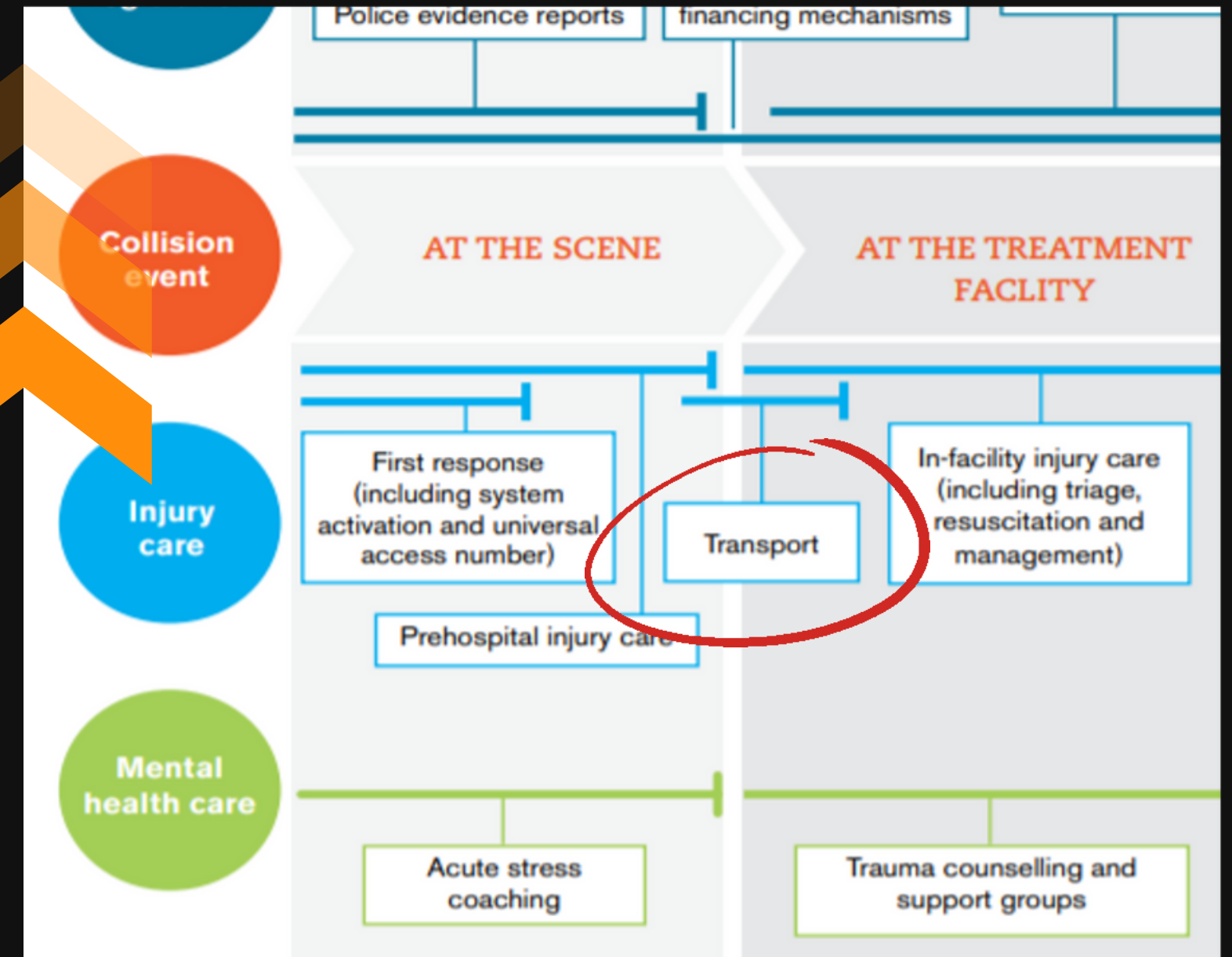


EMERGENCY CARE SYSTEM

4. Patient transport

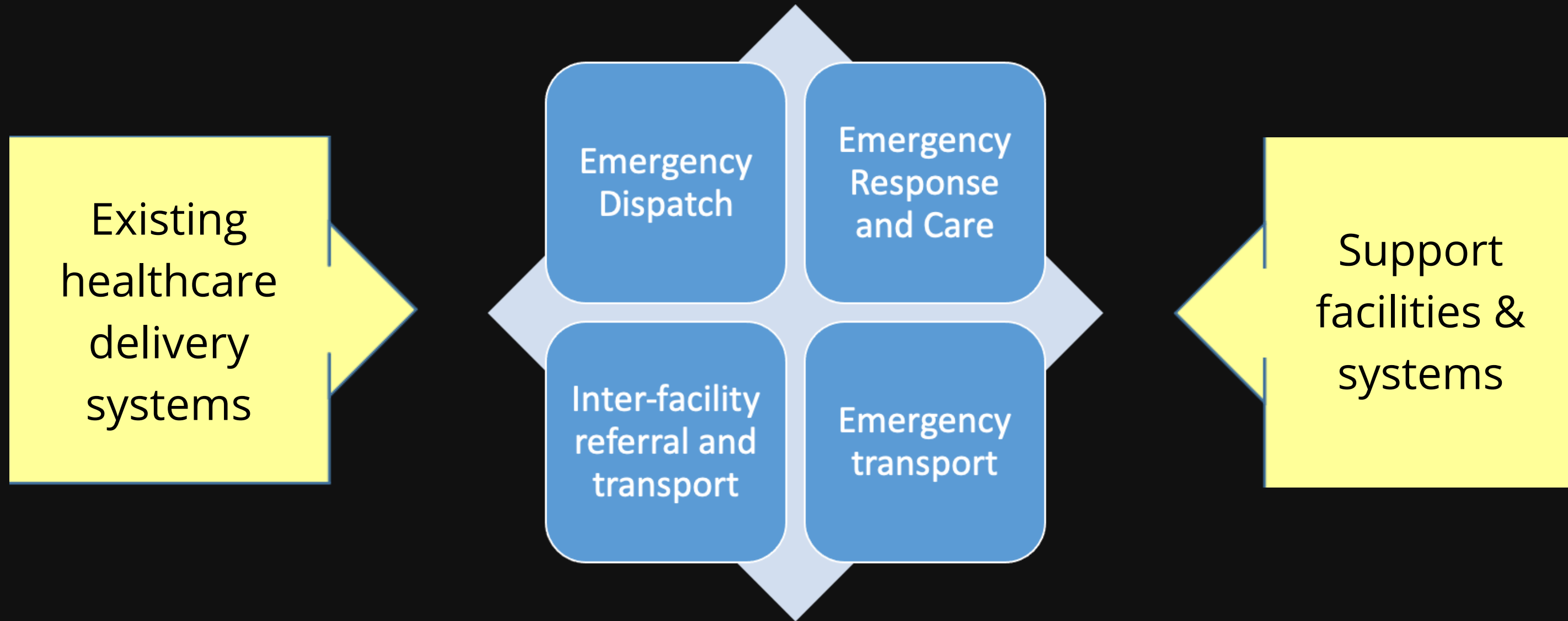
- To the most appropriate facility
- Includes transport care

- Designate certain hospitals
- as trauma centers
- Protocols
- Public education



ROAD SAFETY MANAGEMENT: PREPARING YOUR LGU

Legal framework

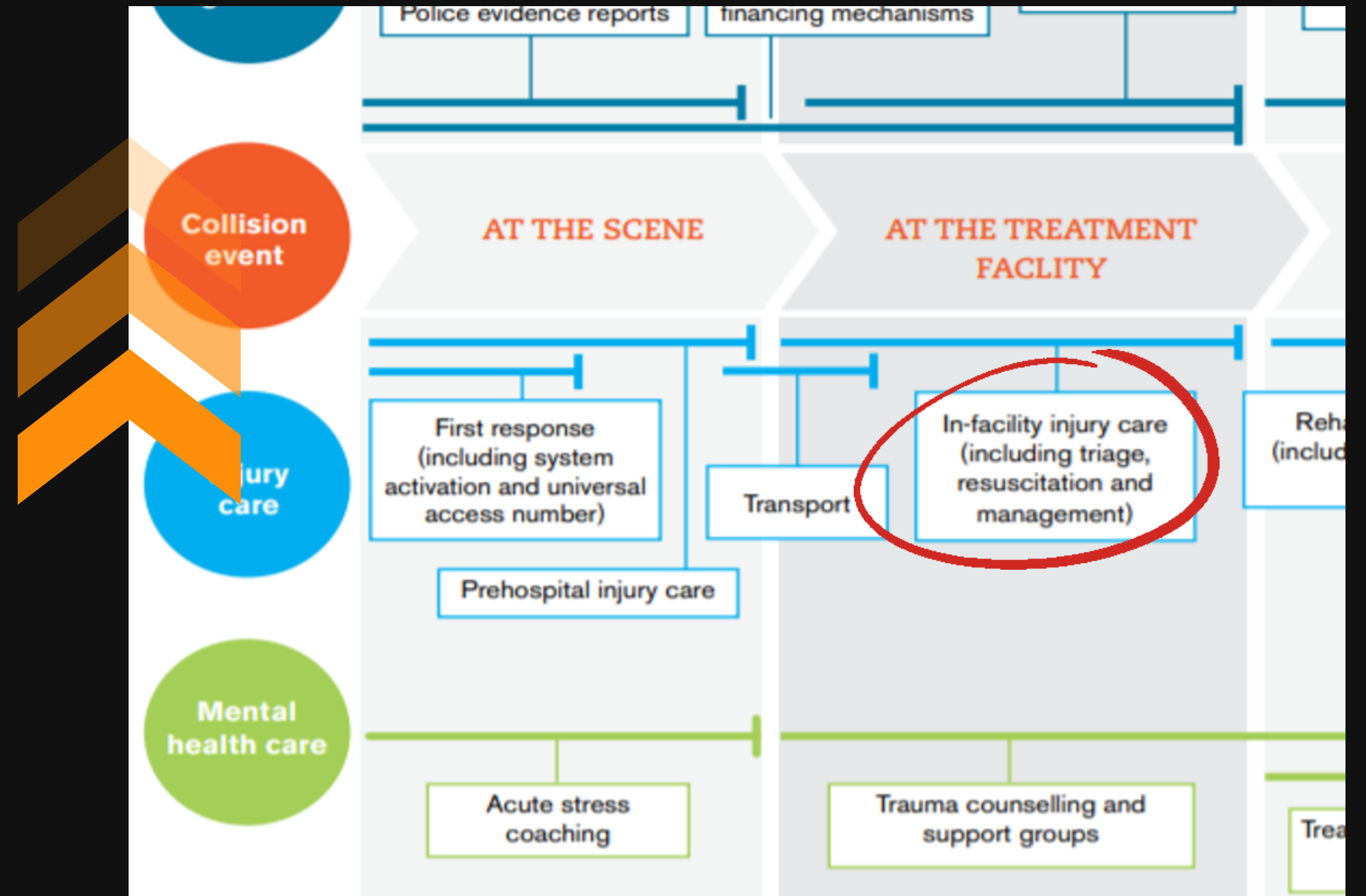


Governance

EMERGENCY CARE SYSTEM

5. Hospital Care

- Dedicated emergency area/unit
- Trained health professional
- Protocols/checklists
- Equipment for diagnosis and treatment
- Access to surgical, anaesthesia and critical care services

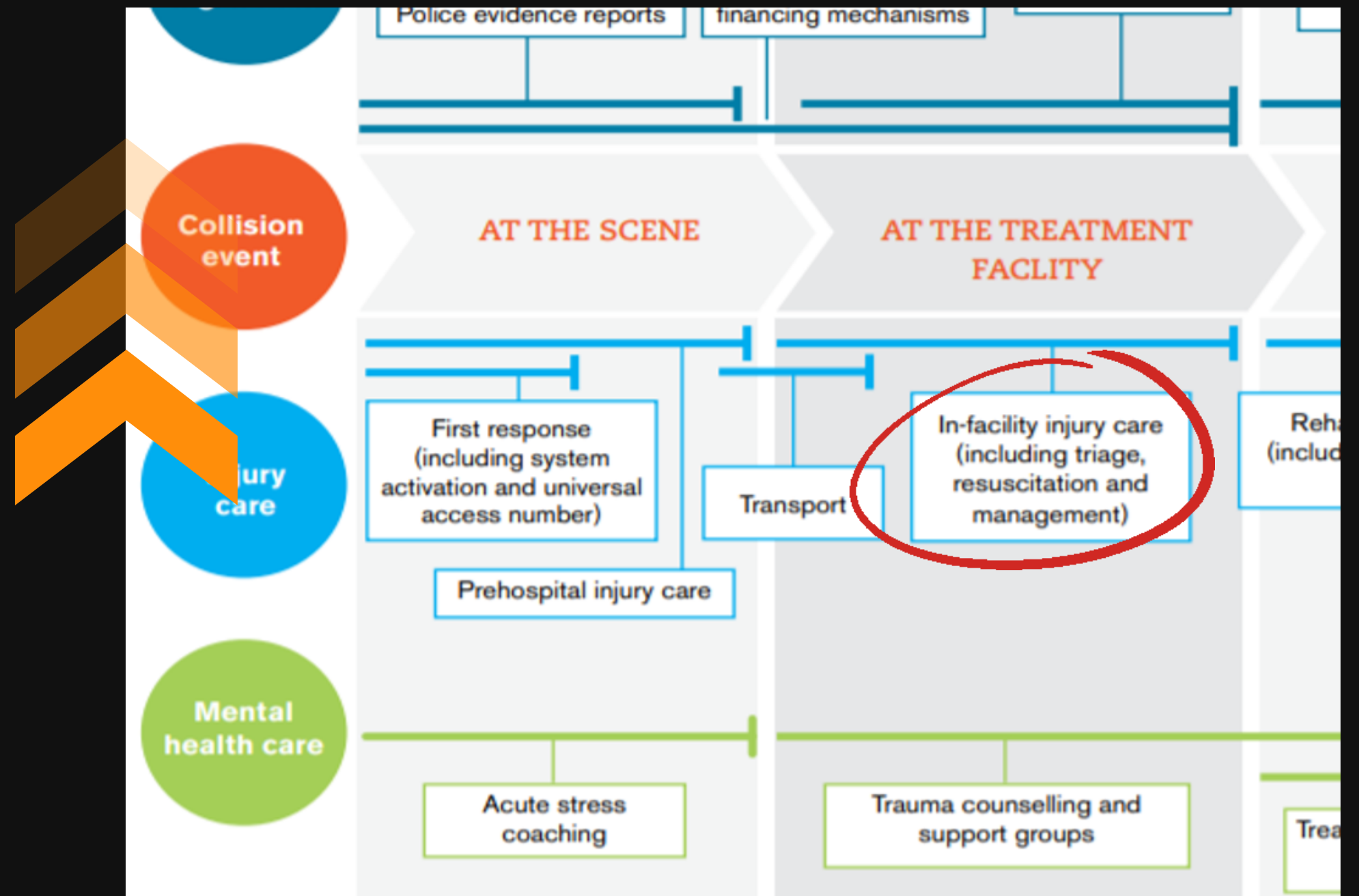


REHABILITATION & REINTEGRATION

Extended post-crash response

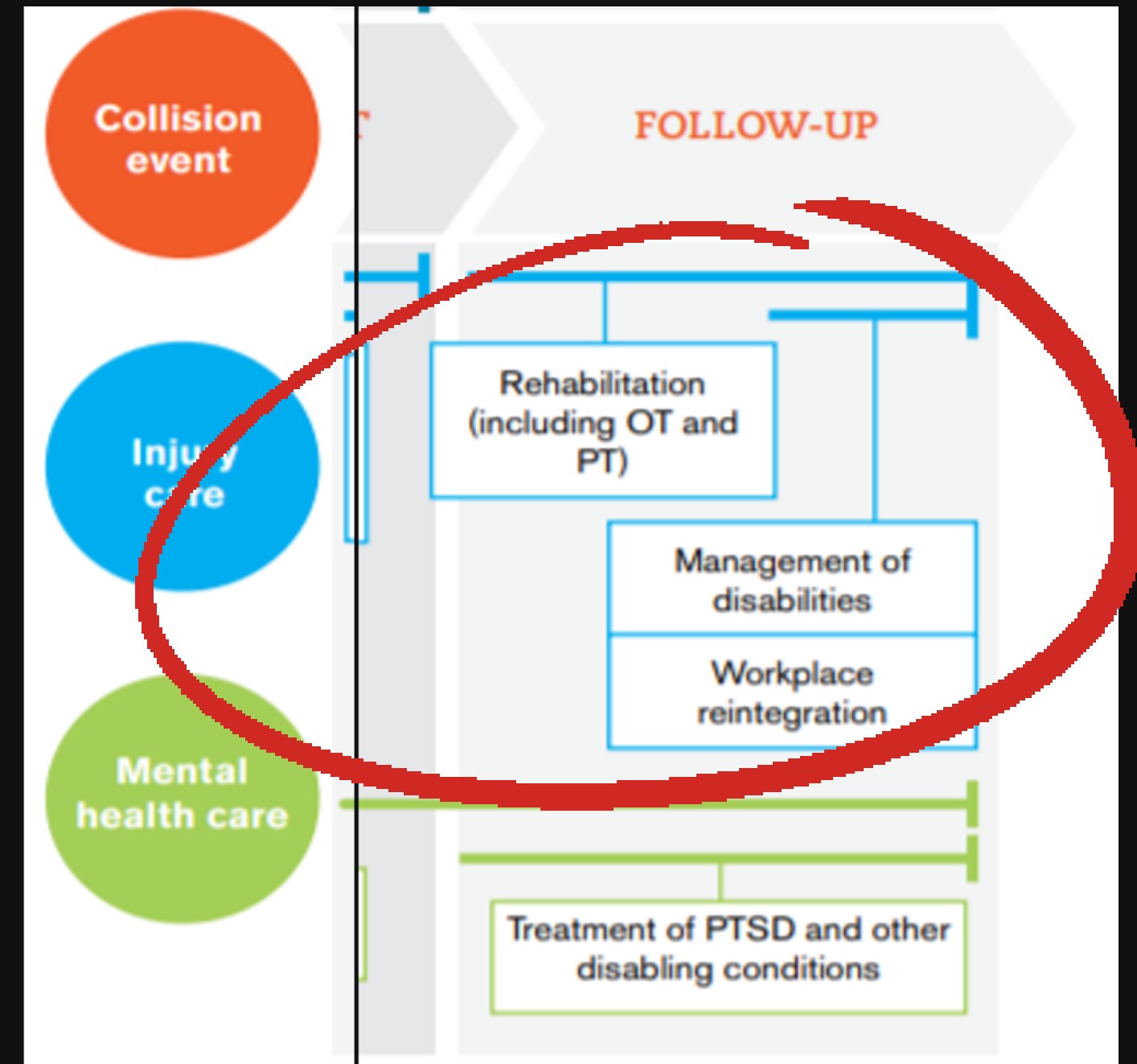
Facing long-term impairment and associated disability:

- Physical – home modification, vehicle adaptation, assistive devices, medical supplies
- Psychological – employment counseling, emotional support



REHABILITATION & REINTEGRATION

- Rehabilitation can help to alleviate suffering, prevent further risk of harm, and optimize functioning, allowing for restoration of independence and reintegration into society
- Early and long-term rehabilitation are essential to limit the physical and psychological impact of injuries, and to maximize the impact of emergency and surgical care



ROAD CRASH & EMPLOYMENT



A large number of people lose their jobs after traffic crashes:

- **70.7 %** of the disabled and **27.6 %** of the non-disabled victims of road crashes experienced job losses after the incident.
- **67.9 %** of the disabled and **24 %** of the non-disabled who lost their jobs remain unemployed for long periods of time.

ROAD CRASH & EMPLOYMENT



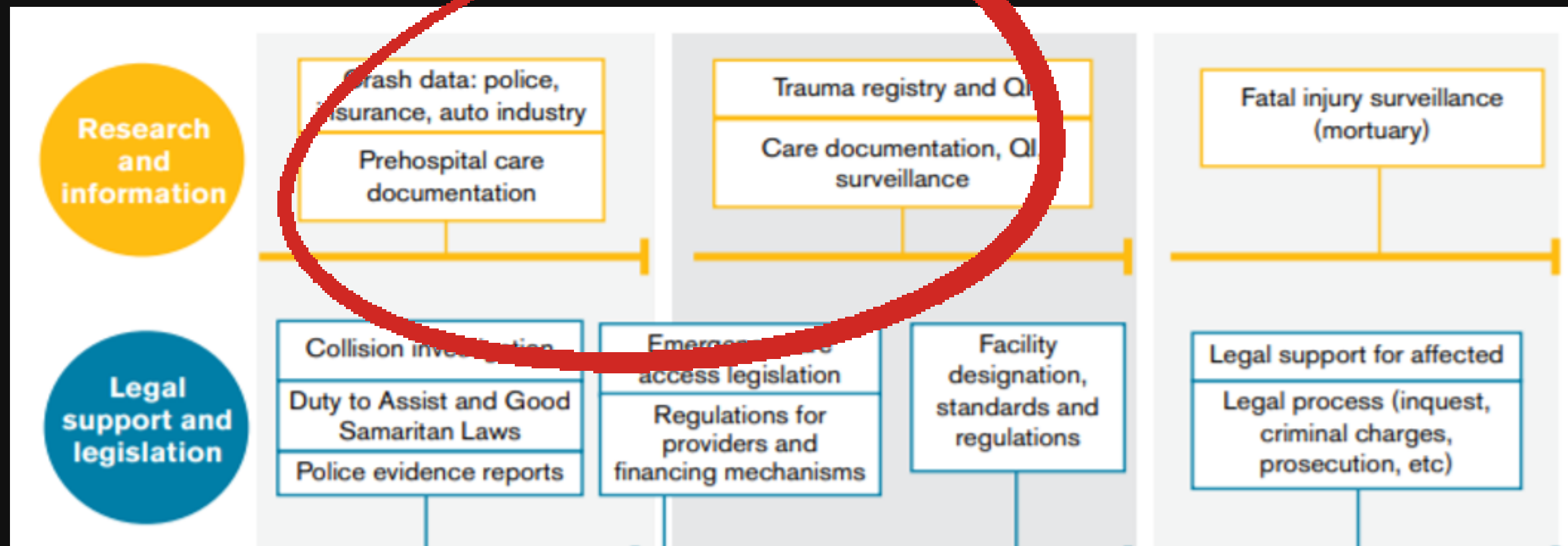
It takes longer for victims of road crashes to find jobs:

After they finally leave a hospital, the length of time for job searching for disabled and non-disabled people is **38 months and 19.8 months** respectively, compared to the average of 2.8 months for people not involved in road crashes.

EMERGENCY CARE RESEARCH & DATA COLLECTION

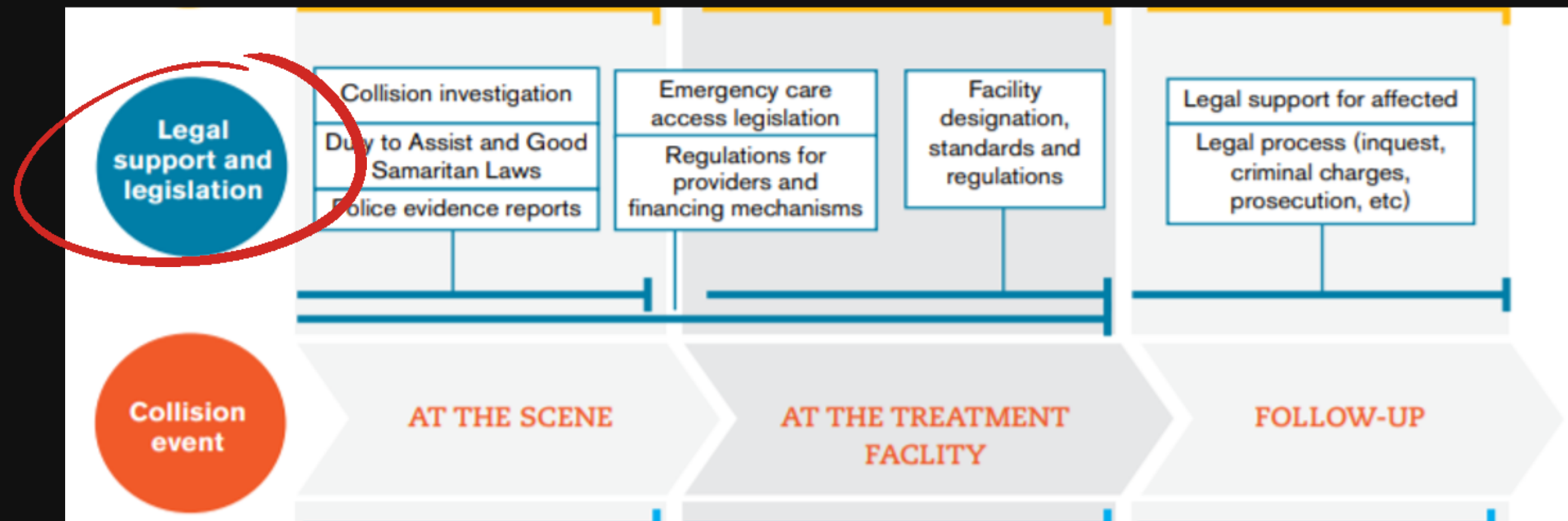
Trauma registries - include details on injury events and patterns, clinical interventions and health outcomes

- identification of risk factors for injury occurrence or for poor outcomes after injury
- identification of specific gaps in quality of care



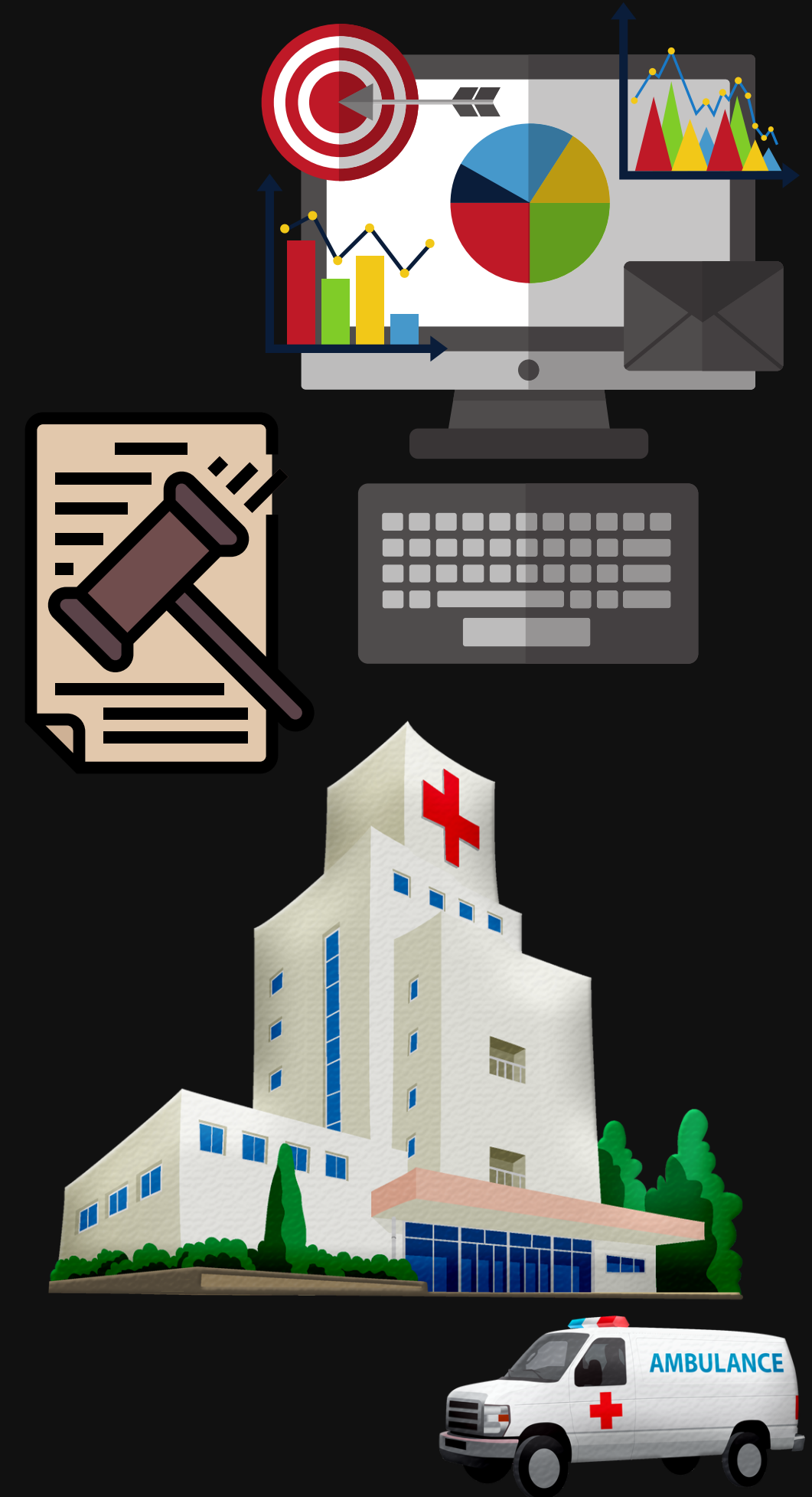
LEGAL SUPPORT & LEGISLATION

- Protect the injured and their families
- Protect the bystanders who deliver first aid
- Facilitate legal and financial accountability and ensure compensation
- Promote post-injury recovery and reintegration into work and home life



CONCLUSION

- Survivors and families affected by road traffic crashes have a range of physical, psychological and legal needs.
- An effective post-crash response integrates injury care, mental health services, legal support, and legislation with systematic collection of data on crashes and injuries.
- The goal of Pillar 5 is to reduce the impact of road traffic crashes, to ensure appropriate legal process, and to facilitate recovery of those affected.



QUIZ

Answers to these two questions are given (5) points.

QUESTION 1

What are the Key Components of the Post-Crash Response ?



QUESTION 2

What is the core of the post-crash response?



QUIZ

Answers to these two questions are given (5) points.

QUESTION 1

What are the Five (5) Pillars of Road Safety?



QUESTION 2

Give 1 example for each road safety pillar.

